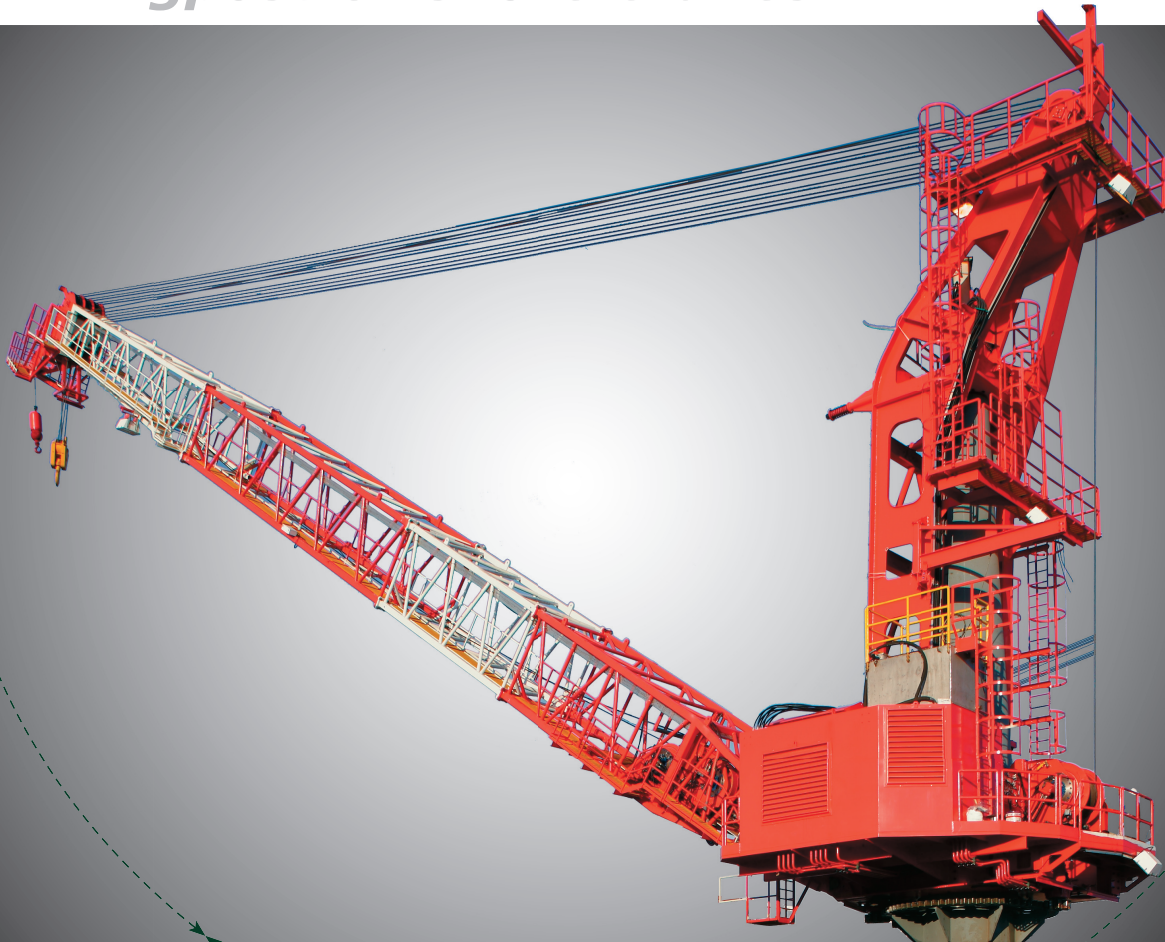


*Kingpost Offshore Cranes*  
**Kingpost Offshore Cranes**  
*Kingpost Offshore Cranes*



**GLOBAL SOLUTIONS**

DESIGNING, MANUFACTURING AND PACKAGING FOR THE OFFSHORE INDUSTRY

**Beyond Integration**  
**Seamless Solutions™**

# Kingpost Offshore Crane

## TSC Value Engineered Kingpost Cranes Features & Benefits

- ✓ API 2C Licensed Manufacturer - Certified to API Q1 and ISO 9001 Quality Standards
  - TSC Offshore Corp – Houston, TX     API License 2C-0097
  - TSCOE – Qingdao, China             API License 2C-0101
- ✓ API Type "E" Kingpost Design
  - Kingpost cranes mount on top of a post welded to the rig structure, not on top of a bearing. Bearing failure will not result in a kingpost crane becoming dislodged from its foundation
- ✓ Redesigned Structures
  - Value engineered structures offer increased rigidity at lower weight
- ✓ Redesigned Hydraulic System
  - Dedicated hydraulic pump circuit for each function ensures safe and reliable simultaneous multi function operation
  - Safe & Reliable electric / hydraulic controls offer optimum hydraulic system performance
  - Available emergency crane operating system allows full function crane operation in the event of prime mover or hydraulic pump failure
- ✓ Redesigned Upper and Lower Bearing System
  - Non metallic upper and lower bearings provide smooth swing operation and low maintenance
- ✓ Redesigned Operator Cab
  - Spacious ergonomic operator cab
  - Soundproofing throughout the machinery enclosure and operator cab ensures sound levels below 80 dB (A) in the operator cab
- ✓ Boom mounted main and auxiliary hoists
  - Hoists have two independent brake systems, each capable of holding 150% of the rated load

## OFFERING TOTAL SOLUTIONS

TSC Offshore's expanded capabilities include turn-key packages for refurbishments, new rig construction, and mechanical engineering consulting services.



TSC Offshore, 7611 Railhead Lane, Houston, Texas 77086, USA  
Tel: +1 832 456 3900 Fax: +1 832 456 3901 Email: [sales@tscoffshore.com](mailto:sales@tscoffshore.com)  
Visit our Website at [www.tscoffshore.com](http://www.tscoffshore.com)

# Kingpost Offshore Crane

- ✓ TSC API Type “E” Diesel / Hydraulic or Electric / Hydraulic Kingpost Cranes
- ✓ Designed and Manufactured in Accordance With API Spec 2C Latest Edition
- ✓ ABS and CCS Certification Available

## Technical Specification Comparison

MODEL	Model 162	Model 198 - 200	Model 240-200	Model 240-250
Main Hook Capacity	50 MT	70 MT	80 MT	100 MT
Boom Length	80 – 120 ft	100 –140 ft	140 – 170 ft	140 – 170 ft
Auxiliary Hook Capacity	Maximum 11 MT	Maximum 15 MT	Maximum 15 MT	Maximum 15 MT
Design Life	25 years	25 years	25 years	25 years
Kingpost Dimension	54" × 1.5" Wall (1,372 mm ×38 mm)	66" × 2" Wall Thickness (1,676 mm ×50 mm)	80" × 2" Wall (2,032 mm ×50 mm)	80" × 2.5" Wall (2,032 mm ×65 mm)
Typical Application	Bottom Supported Structure	Platforms, Jackups, & Floaters	Platforms, Jackups, & Floaters	Platforms, Jackups, & Floaters

The newly redesigned TSC "Value Engineered" kingpost cranes offer quality state-of-the-art design and innovative features the offshore industry demands. Adherence to strict manufacturing processes ensures quality long life products. TSC Offshore is committed to furnishing a safe, high quality, and dependable crane that will withstand the rigors of the offshore environment. This pledge is just one of the many ways you can be assured TSC is

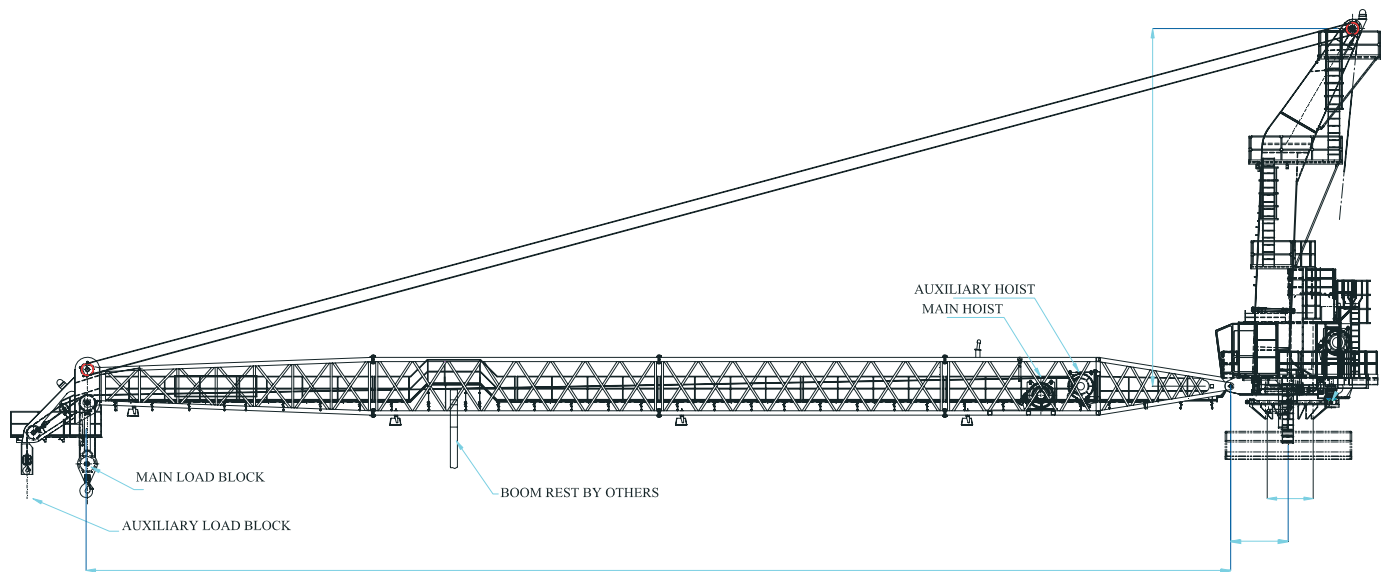
**RAISING THE INDUSTRY'S STANDARD!**



TSC Offshore, 7611 Railhead Lane, Houston, Texas 77086, USA  
Tel: +1 832 456 3900 Fax: +1 832 456 3901 Email: [sales@tscoffshore.com](mailto:sales@tscoffshore.com)  
Visit our Website at [www.tscoffshore.com](http://www.tscoffshore.com)

# Kingpost Offshore Crane

API SPEC Q1 ISO 9001:2008 ISO/TS 29001 API SPEC 2C



TSC Offshore, 7611 Railhead Lane, Houston, Texas 77086, USA  
Tel: +1 832 456 3900 Fax: +1 832 456 3901 Email: [sales@tscoffshore.com](mailto:sales@tscoffshore.com)  
Visit our Website at [www.tscoffshore.com](http://www.tscoffshore.com)

April 20, 2012