

WORKFORCE™ MAKE THE DIFFERENCE

WORK FORCE™

- ✓ **Innovative Design** - Compact, lightweight, harmonically balanced and aligned
- ✓ **Frame** - Robust, double reinforced 50 Kip high strength, heat treated, stress relieved low alloy steel, designed for discharge pressure up to 7500psi
- ✓ **Crankshaft** - Forged and heat-treated alloy steel, balanced, mounted to the power frame with double-row, self-aligning radial spherical roller bearings
- ✓ **Connecting Rod** - Low alloy steel, forge-welded and heat-treated
- ✓ **Bull Gear** - Forged and heat-treated, alloy steel ANSI 4340, double helix gear machined to AGMA grade 10
- ✓ **Pinion Shaft** - Forged and heat-treated, alloy steel ANSI 4340, double helix gear machined to AGMA grade 10, teeth surface hardened to BHN 360-400
- ✓ **Bearing** - Premium SKF, Timken or equivalent bearings typically with minimum L10 life of 30,000 hours at rated load
- ✓ **Crosshead** - Nodular ductile, cast iron with interchangeable slides
- ✓ **Super Nut** - on Main Bearing cap in lieu of Hex nuts
- ✓ **Lube System** - AC Electrical system standard
- ✓ **Fluid End Modules** - Interchangeable with Multiple OEM fluid end modules & components
- ✓ **Rubber Sealing Components** - American rubber components standard

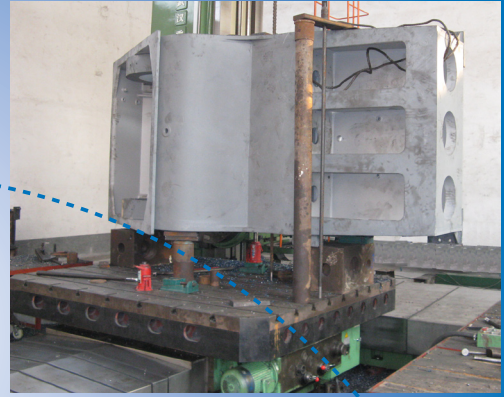
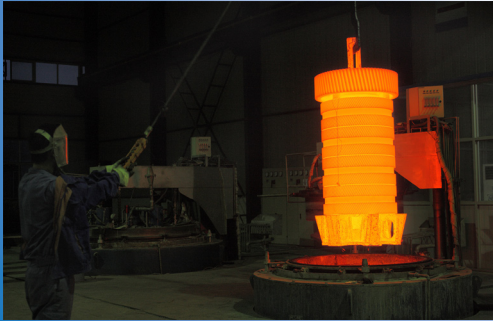
Common Generic Brands

- **Design** - Generally copied from antiquated designs. Functional, but are generally characterized to be unbalanced, heavy, large and comparatively lower power to weight ratio
- **Frame** - Uses a 32 Kip welded steel plating capable of handling discharge pressure to 5000psi on the power frame
- **Crankshaft** - Cast Alloy steel single or multi piece core with welded components
- **Connecting Rod** - Cast, 3 piece welded steel Connecting Rods
- **Bull Gear** - Gear from ANSI 4140 steel, forged, machined to AGMA grade 8, teeth surface hardened to BHN 270-300
- **Pinion Shaft** - Forged Pinion shaft, gear machined to AGMA 8, teeth surface hardened to BHN 320-350
- **Bearing** - Chinese made bearings with L10 life of or less 15,000 hours under rated load
- **Crosshead** - slides are not interchangeable
- **Chinese made hex nut** with generally inconsistent yield strength
- **Generly used Lube system** - not offered as standard
- **Fluid End Modules** - Interchangeable with only single OEM counterpart
- **Rubber Sealing Components** - Chinese made rubber components standard



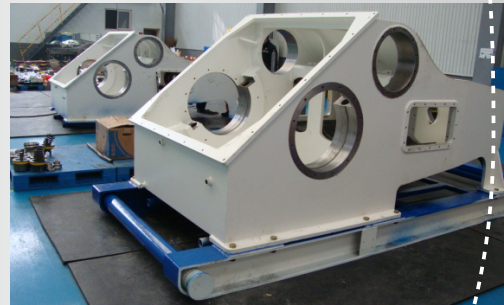
WORKFORCE™ Triplex Pump

- Localized Service through a Global Network
- Maintenance/Repair Service
- Alignment, Clearance & Tolerance Adjustments
- Internal Repair/Replacement Service
- Closed Circuit Pressure Testing
- Unitized Pump Packages with Diesel or Electric Drive
- Complete Pump Refurbishment
- 24x7x365 Technical Support



- API 7K, Q1 & ISO 9001 Certified
- World Class R&D Team
- Fully Stocked Local Inventories
- Wholly-owned Manufacturing Facilities
- Global Quality System

- Worldwide Immediate Parts Support
- Mature Global Supply Network
- Available Maintenance Agreements
- Rental Services
- In House Financing Available on Volume Orders



TSC Manufacturing and Supply LLC, 13788 West Road, Suite 100, Houston, Texas 77041, USA
Tel: +1 832 456 3900 Fax: +1 832 456 3998 Email: sales@t-s-c.com
Visit our Website at www.t-s-c.com